



Welding equipment and accessories



ART.BA.1013939 KIT AIRVISOR 2MV DMAK - 0023 AIR SUPPLY FOR PAINTING



Honeywell

Kit composed of: a visor with acetate screen, 2 midslips, a non-woven seal, a non-woven fabric neck cap and a belt with flow regulator and activated carbon filter.

Use of the product: in the chemical industry, where the respirator is used without being connected to a compressed air tool or a spray gun; or for painting operations, for example, in the automotive industry (especially with the use of isocyanate paints) and in furniture factories. Possibility of use also in the chemical industry.

(Also available in the welding / grinding version art. BA.1013987).

Packing: 1/10.



ART.BA.A133230-00 SANDBLASTING HELMET "COMMANDER"



"Commander" air blasting helmet with a bison cap. Rubber coated to reduce noise and wear. Equipped with flow meter with indicator for greater safety. Protection of shoulders, back and chest thanks to the cape.

Disposable visor: protects the main visor. Metal mesh screen. Adjustable head harness. Suitable for use in sandblasting work. Focused visual field (145 x 90 mm). Weight 2 kg (including tube and regulator).

EN 14594.

Packing: 1 pz.

ART.CHEMICAL CA2F + KIT HEAD GX2 AUTONOMOUS FILTERING UNIT WITH INTERCHANGEABLE FILTERS FOR DECONTAMINATION AND PAINTING ENVIRONMENTS



NEW

The electronic system introduces a constant flow of air at 160 l / min. Unique locking system, prevents unwanted contamination from solid particles when changing filters. Easily replaceable lithium ion battery provides run time for charge up to 10 hours. Version with full face mask GX-02. IP65, high protection NPF 2000.

Norm: EN 12941 TH2 / TH3, TM3 EN12942, EN136.

Packing: 1/1.

ART.CHEMICAL CA2F + KIT HEAD CA4 UNIT SELF FILTERING INTERCHANGEABLE PROTECTION HEAD - HEARING



The electronic system introduces a constant flow of air at 160 l / min. A single locking system prevents unwanted contamination from solid particles when changing filters. Easily replaceable lithium-ion battery, provides execution time per charge up to 10 hours. Version with helmet and headphones. Ideal for heavy industrial environments, surface finishing operations, building industry.

Norm: EN 12941 TH2 / TH3, TM3 EN12942, EN 12941 Th1 / Th2, EN 14594 2A / 3A, EN 166, EN 397. Packing: 1/1.

ART.LA.CR16S4 SELF FILTERING SYSTEM "AIRKOS S4" "auto darkening four sensor"

SUITABLE FOR WELDING - GRINDING



Self heating system kit "suitable for welding and grinding"; It is made of a filtering belt unit, complete with lithium battery (10 hours autonomy), battery charger, TH2PSL filter, belt, flame retardant hose / mask connection. Panorama viewer at 180 °, speed of darkening 0.2 m / sec. Adjusting to DIN 4-9 / 13. The filter group can also be used for other types of masks.

NORM: EN 12941, CE 00196/379, CE DIN EN379/175B/166B.

Packing: 1/1.

ART.CE.R23CHFUVKIT KIT CONCEPT AIR ASSISTED VENTILATION

NEW



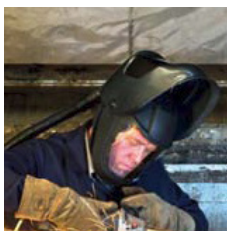
The kit consists of a case containing: helmet complete with headphones and adjustable anti-fog visor, battery and battery charger with 4 types of plugs, 7.4V light lithium ions, 200 liters of filtered air per minute, TH2PSL particulate filter and 5 prefilters lasting 8/10 hours. Use of the product: without being connected to a compressed air tool or a spray gun, for example, in the demolition construction industry. Possibility of use even where there is noise and requires the use of a helm.

Weight only kg. 4.8

NORM: EN 12941, 397, 166(1B39), 352 SNR30DB.

Packing: 1 pz.

ART.LA.AM5033 FILTERING SYSTEM AIRMAX WH30 ALBATROS double screen for welding and grinding



Self heating system kit "suitable for welding and grinding"; It is made of a filtering belt unit, complete with lithium battery (8/10 hours), battery charger, TH2PSL filter, belt, proban connecting hose to the mask. transparent protection visor with tip up front visor with adiacinic glass DIN 10 dim. 110x90mm. Simple movement for alternating welding or grinding. The filtrant assembly can also be used for other types of masks.

NORM: EN 12941, CE 00196/379, CE DIN EN379/175/166. **Packing:** 1/1.



NEW

NEW

ART.CE.R23FUVNKIT KIT CONCEPT AIR FOR PAINTING ASSISTED VENTILATION



Complete kit of protection system respiratory tract with visor lightweight flip-up polycarbonat for maxim the vision at 360 grade and the covering of the head. 200 liter of filtered air for minute New battery light Li-ion , with a type of utilizationof 8 hours before the recharge.complete of particulate filter TH2PSL. It weighs only kg. 4.2. The use of this instrument offers great advantages in terms of movement, having only the supply of air at the belt, which is always clear, the inside of the mask with fresh air circulation keeps the person always in excellent condition. work without sweating.

NORM: EN 12941 TH2P, EN 166 1B93.

Packing: 1

ART.OP.4500202G - AUTONOMOUS FILTERING UNIT Optrel Clearmaxx Helmet

NEW



Helmet kit + assisted ventilation apparatus with filtered air and adjustable purifier for distribution with three settings of 150/250 nl / min, using a switch can be used to power 20% of the air that cools the front area. This avoids direct air in the eyes. The easy-to-change DIN5 front cover lens expands the system to the perfect protection for efficient plasma cutting. It weighs only 495 gr. Ideal for: grinding, metal industry, food industry, sandblasting, wood processing, agriculture. Safety class (TH3) from smoke, aerosol and dust. Increased productivity. An efficient battery anagement system with operating times of up to 20 hours offers uninterrupted workflow over two shifts, thus increasing the effective welding time of the welder. The system of filtering it consists of a particulate filter. The large particle filter reduces the speed clogging of the filter. Together with the sophisticated concept of change of filter, this helps customers optimize operating costs.

Norm: EN 12941, TH3, EN 379.

Packing: 1/1.

ART.OP.4550500G ASSISTED AUTONOMOUS FILTERING SYSTEM PANORAMAXX auto darkening with five sensors" IDEAL FOR WELDING AND GRINDING

Autonomous filter system kit "ideal for welding and grinding"; is composed of the Optrel panoramaxx mask with autopilot. Adaptive adjustment of protection level DIN 2.5 / 5-12, with e3000 respiratory protection system. RTW e3000 green fan breathing protection 20h and panoramaxx fresh air helmet. (Including battery e3000 - 20h). Field of view 6 times wider than standard helmets. Fully automatic protection level adjustment, color view, 2.5 protection level in idle state. New energy concept with batteries. Maximum safety class (TH3), Better comfort (from 150 to 250 nl / min). Faster operational readiness thanks to the integrated air function test. Increased productivity (battery life up to 20 hours). Lower operating costs thanks to the sophisticated filter system Suitable for MIG / MAG / TIG / PLASMA, GAS, GRINDING welding.

NORM:EN 12941, DIN EN379/175B/166B.

Packing: 1/1.

Welding equipment and accessories

ART.BA.1013987 KIT AIRVISOR 2 SERIE W SUPPLIED AIR RESPIRATORS FOR WELDING



NEW

Airvisor 2 W Series for welding, complete with: High temperature resistant mask, 110 x 90 screen, internal visor with PC screen, flame retardant fabric lining, belt with filter (DAVW-1003E) with alarm and bag for storage. FPN2000, FPO 40.

**NORM: EN 14594,
Packing: 1/1.**

NEW



ART.OP.1010000

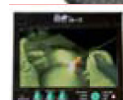
**AUTO
DARKENING
WELDING
HELMET
PANORAMAXX
5/12
WITH LARGE
VISUAL FIELD
6 TIMES
COMPARED TO
AN ADF**

It offers an unprecedented visual environment for the welder. A nose piece in the auto-darkening filter (ADF) brings the lens closer to the eyes, enlarging the field of view 6 times compared to a standard ADF. Together with a state of world record light of 2.5, the True Color view, automated autopilot function (with manual adjustable option) completely shadow level adjustments during welding. No. 5 sensors, return to the clear 0.90 ms, with its rechargeable battery, it is no longer necessary to replace the batteries. weight gr. 550. Suitable for MIG / MAG / TIG / PLASMA, GAS welding. **Norm: EN379, CE, ANSI Z87.1.**

Packing: 1/1



**ART.
LA.710C8000
MASK
AUTO
DARKENING
WH50 TL MV
390 GRAPHITE**



180 ° panoramic view with UV IR5 side inserts, DIN 3-9 / 12 degree of protection, adjustable return time from 0.1 / 1, adjustable sensitivity, speed 0.04 m / sec., Power supply 2 AAA batteries, display dim. 110x90 mm, 2 independent sensors. Excellent frontal and lateral coverage, attenuation to 10 db roll, wide chin guard.

NORM: CE 00196/379, CE DIN EN379/175/166.

Packing: 1/1.

NEW



**ART.LA.PL16S2
MASK
AUTO
DARKENING
"RACING
BLUE S2"**

Compact helmet, not bulky and close to the face, powered by solar cells, external protection more resistant 1.5 mm thick, 120m / sec, optical class 1 1 1 2, two independent sensors, adjustable DIN 4/9 -13, delay adjustable, adjustable sensitivity, dimming speed 0.3m / sec.

NORM: CE DIN EN 166B, 175B, EN379.

Packing: 1/1.

NEW



**ART.LA.J8019
MASK AUTO
DARKENING
WH30 SCORPION
"suitable to
alternate
grinding and
welding"**

Sturdy and lightweight helmet, suitable for all processes, battery powered and 2 sensors, dimming time 0.3 ms, manually adjustable sensitivity, two independent sensors. Visual area size 90x40 mm. DIN (external regulation) 4-9 / 13 variable.

**NORM: CE DIN EN
166/175/379.**

Packing: 1/1.



ART.LA.J5032

**MASK
INACTINIC
"ALBATROS
WH30"
suitable to
alternate
grinding and
welding**

Optimal inattinic mask to alternate grinding and welding with a simple movement. Clear protective visor (160x180mm) with drop-leaf front panel with inattinic glass DIN 10 - 110x90 mm.

NORM: CE EN 166/175. Packing: 1/1.

NEW



**ART.OP.1008000
WELDCAP
FOR WELDING
"WELDCAP RC 3/9-12"
FOR ELECTRODE MIG,
MAG, TIG, PLASMA**

It is a self-darkening welder cap that combines the comfort of a hood and the advantages of a complete welding helmet. It is made of plastic and fabric parts. It is soft where it must be comfortable and rigid where it must be hard. The fabric part is easily detachable and washable, it is fireproof and completely hygienic. Darkening levels cover most welding applications. Wide field of view. It weighs less than a kilo. Socket for attachment to belt. Adjustable with GRIND mode. Utilizes 2 LI 3v batteries (CR2032), battery life 1,000 hours, low battery warning LED. 2 year warranty. **NORM: EN 379/175/166/AS/ NZS1337.1, ANSI Z87.1. EN11611/ EN 11612 A/B/C1/E3/**
Packing: 1/1.



**ART.MD.1
WELDING
MASK PASSIVE
"TYPE
LAMADOR"
WITH GLASS
DIN 10**

Compact design in thermoplastic material; lightness and high resistance. It is a material that protects the welder from slag and high temperatures up to about 400 ° C. Including 108x50 mm slide, DIN 10 and glass covers.

NORM: EN 175 - EN 166.

Packing: 1/50.

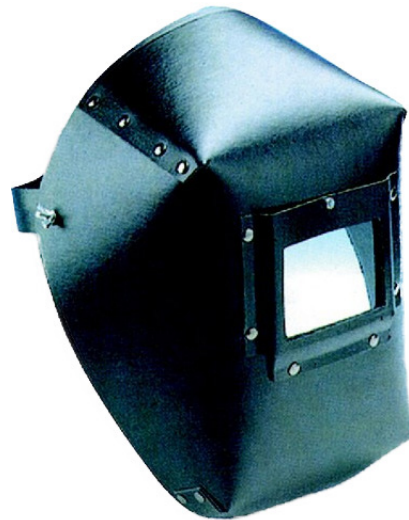


**ART.SB.181
HAND SCREEN
FOR WELDING**

Welding inclined mask (without glass) To be completed with glass dimensions: 75 x 98 mm.

NORM: EN 175.

Packing: 1/20.



ART.SB.182

**HELMET
SCREEN**

Protective mask with fibreglass cap for welders (without glass) To be completed with glass art. 183 and 184 (Size 75 x 98 mm).

NORM: EN 175. Packing: 1/20.



**ART.LA.
PROTECTION
SCREEN
FOR AREAS
OF WELDING
STRIPED
CUSTOMIZED
MODULAR**

Honeywell

Modular shielding in thermoplastic material, for an optimization of the spaces. The modularity of the system allows extremely flexible workstations.

NORM: EN 1598.

Packing: 1/1.



ART.LA.80671

**PROTECTION
SCREEN
WELDING
AREA
STRIPS**

Modular screen with orange curtain strips. Allow to realize portable protective barrier enable the operators to move. The screen provided in the kit for installation. Made of painted steel hose, can be used to build boxes for welding operations thanks to the joining feet. Dimensions cm 200 x 190 h. Thickness mm 0.4.m.

NORM: EN 1598. Packing: 1/1.



GAMMA SAFETY
www.gammasafety.it

Authorized distributor Romania

RIG ENERGY CONSULTANTS SRL
14 Gheorghe Grigore Cantacuzino
100010 Ploiesti, Romania
Email: info@rigenergy.ro
Mobile: +40 739 855 200
www.rigenergy.ro