



Winter knitwear





ART.VA.NIL SWEATSHIRT CREW-NECK GR.295

Sweatshirt with lined interior 295 gr / m2. gauzed. Ribbed armholes, neck, sleeve and bottom. Double seams on shoulders and armholes. Material: 50% cotton 50% polyester.

Colour: blue navy.
(on request 24 colours: grey anthracite, white, orange, yellow, black, graphite etc.).

Sizes: from S to XXL.

Packing: 1/40.



ART.VA.ALA SWEATSHIRT CREW-NECK GR.295 100% COTTON

Crew-neck sweatshirt, **100% cotton**. Inside fabric gauzed 295 gr/m2. Ribbed neck, cuffs, sleeves and bottom. Double seams on the shoulder and armholes.

Colour: blue navy.

Sizes: from S to XXL.

(TG.3XL EXTRA PRICE).

Packing: 1/40.



ART.P.844MP SWEATSHIRT CREW NECK "CONTRASTO"

Crewneck sweatshirt. Elasticized neck with line contrast elasticized cuffs and waist. Double needle riveting on the neck, sleeves and hem reinforcing tape inside shoulder to shoulder.

Fababric:
Gr. 300 (35/65 cot./pol.).

Colours: blue navy, royal.

Sizes: from S to 2XL.

Packing: 10/20.



ART.CO.DENMARK SWEATSHIRT CREW NECK GR. 350 WITH INSERT

Crew-neck sweatshirt with contrast insert, straight bottom with cuffs. **Fabric 100% natural fiber**, gives softness the sweater with an excellent cold insulation (antibacterial, protection U V). 47% cotton, 24% soy, 5 spandex®, 5% modal®.

Colours: red/navy, navy/orange, mud/black, anthracite/black.

Sizes: from S to 4XL.

Packing: 1/10.



ART.GS.64070 SWEATSHIRT HALF ZIP **100% GAUZED COTTON**

Half zip sweatshirt gr. 280, (100% gauzed stabilized cotton) ribbed at the cuffs, and at the bottom. Reinforced seams, bright colors. Raglan sleeves.

Available colors: navy blue, dark gray.

Available sizes:
from S to 4XL.

(CREW NECK MODEL
ART. 64069 / CO).

Packing: 5/30.



ART.SO.00205 SWEATSHIRT HALF ZIP "ANTHRACITE"

Sweatshirt with zip collar, stretch ribbed bottom and cuffs, design and functionality.

Fababric: Cot/Pol.35/65 gr. 280.

Colour: anthracite.

Sizes: from S to 3XL.

Packing: 1/20.





ART.P.264MP SWEATSHIRT HALF ZIP "CONTRASTO"

Turtleneck sweatshirt. Short zipper with removable slider. Elasticized cuffs and waist with line contrast, double needle riveting on the neck, sleeves and hem. Reinforcing tape inside shoulder to shoulder.
Fabbri: Cot/Pol.35/65 gr. 300.

Colour: blue navy.

Sizes: from S to 2XL.

Packing: 10/20.



NEW

ART.SO.08105 SWEATSHIRT HALF ZIP BICOLOR

Half-zip sweatshirt with inner sweatband, bicolor. Cuffs and bottom in stretch jersey.
Weight: Gr. 280 65/35 cotton / polyester.

Available colors:
dark gray with black inserts.

Available sizes:
from XS to 3XL.

Packing: 1/24.



ART.CAR.64072U/CO SWEATSHIRT FULL ZIP BEST QUALITY 100% cotton

Sweatshirt with full zip "Best Quality" with two side pockets **Stabilized Cotton 100%**, double seams, stretched jersey bottom and cuffs. Bright colors.
Gr. 280.

Colours available: blue, white, black, grey, royal, orange, red, yellow.

Sizes:
from XS to 3XL.

Packing: 1/30.

CE



ART. P.084MP SWEATSHIRT "CONTRASTO" LONG ZIPPER DOUBLE CURSOR

Turtleneck sweatshirt and line in contrast. Long zipper with double removable slider, elasticized cuffs and waist. 2 pockets with zipper. Double needle riveting on the neck, sleeves and hem reinforcing tape inside shoulder to shoulder.
Fabbri: Cot/Pol.35/65 gr. 300.

Colori available: Blue navy/white, royal/blue.

Sizes: from S to 2XL.

Packing: 1/20.

MADE IN ITALY

BN NR MG BL RY AR RS GL
BIANCO NERO GRIGIO MEL BLU NAVY BLU ROYAL ARANCIO RUSSO GIALLO



ART.SO.0190E SWEATSHIRT FULL ZIP BICOLOR

Sweatshirt with full zip closure, 2 side pockets with zip, collar, cuffs and rib bottom with contrasting stripes. Contrast stitching on shoulders and armhole.

Fabbri: 80% cotton, 20% polyester gr.300.

Colours available: royal (on request colore blue navy).

Sizes:
from XS to 3XL.

Packing: 1/24.

NEW



ART.CAR.64024U SWEATSHIRT FULL ZIP WITH INSERT MADE IN ITALY

Full zip sweatshirt gr. 330 **100% stabilized cotton**, two side pockets, full zip, bottom, collar, knit cuffs.

Colours available:
medium grey with insert blue.

Sizes: from M to 2XL.

Packing: 1/30.

CE

MADE IN ITALY

NEW



**ART.SO.0150E
SWEATSHIRT FULL
ZIP WITH HOOD**

Full zip hooded sweatshirt. 2 side pockets, double rib at the cuffs and waist, hood with drawstring.

Material:
65% cotton, 35% polyester,
280 g / m2.

Available sizes: XS to 3XL.

Available colors: navy blue / white.

(On request: black, royal, red, purple / white).

Packing: 1/24.

WOMAN

NEW



**ART.CO.CAROLINA
SWEATSHIRT FULL
ZIP
"WOMAN"**

Full zip women's sweatshirt, gr. 280. 80/20 cotton / polyester. Complete with 2 large front pockets, knitted bottom and cuffs.

COLOR:
Colors: navy blue with black inserts.

Available sizes: from S to 2XL.

Packing: 1/20.



**ART.BEC.ST5020
LIGHT FLEECE
HALF ZIP GR.170**

Anti-pilling, micro fleece, Half zip, 2 front pockets, bottom cap.

Colours available: dark grey, black, red.

Sizes: from S to 2XL.

Packing: 6/24.

NEW



**ART.PEP.GGX27300
LIGHT FLEECE
HALF ZIP**

Microfleece 200 gr / mq with contrast stitching and short zip color fluorescent.

Material: 100% polyester.

Colour: blue with lime green contrast, gray with orange contrasts.

Sizes: from S to 3XL.

NORMA: EN13688/2013.

Packing: 1/20.



**ART.BEC.FU704
FLEECE
ANITIPILLING
HALF ZIP**

Half zip fleece with tone-on-tone zip, two side pockets, elastic drawstring at the bottom hem, with adjuster.

Material: 100% antipilling fleece gr.300.

Colours available: blue navy.
(on request: black, grey, red).

Sizes: from XS to 3XL.

Packing: 5/15.



**ART.CAR.66361U
FLEECE ANTIPIL-
LING FULL ZIP,
WITH TWO
POCKETS**

Fleece antipilling full zip, with two cargo pockets zip clouser. 100% polyester, gr. 280.

(Available with half zip, many colours, art. CAR.66360U).

Colours: red, anthracite, grey melange light, blue navy, green.

Sizes: from S to 2XL.

Packing: 1/18.

AN MG BL RS VE
ANTRACITE GRIGIO MEL BLU NAVY ROSSO VERDE



ART.BEC.FU703 FLEECE FULL ZIP POCKET/ HINGE

Full zip stack, 2 side pockets with zip closure. Elasticated cord at the bottom of the jacket with stopper and "easy-to-pull rings".
Weight: gr. 300.

Colour: blue navy.

(on request: red, grey, black).

Sizes: from XS to 2XL.

Packing: 5/15.



ART.SI.LINDAU FLEECE FULL ZIP

Fleece (2 layer), breathable, "to be combined with waterproof jacket ILS", anti-pilling treatment. Reinforced seams. Straight collar, zip closure, 2 pockets with zip closure, round insert sleeves, elastic cuffs, elastic hem in elastic.

Material: fleece 2 layer gr. 285.

Colour available: blue navy.

Sizes: from S to 3XL.

Packing: 1/10.



ART.BEC.JN762 FLEECE JACKET TWO LAYERS "MAN"

Two-layer fleece jacket, exterior: 100% polyester, interior: soft fleece. Side pockets with zip, contrast lining on sleeves and cuffs, pocket on zip.

Weight: 280g / m2.

Colour: dark grey/nelange, royal/melange.

Sizes: from S to XXL.

Packing: 1/30.



ART.BEC.JN761 FLEECE JACKET TWO LAYERS "WOMAN"

Two-layer fleece jacket: 100% polyester, inside: soft fleece. Side pockets with zip, contrast lining on sleeves and cuffs, pocket on zip.

Weight: 280g / m2.

Colour: dark grey.

Sizes: from S to 2XL.

Packing: 1/30.



ART.SI.MERIDA FLEECE FULL ZIP (TWO LAYER) GR.285 "MERIDA"

Fleece (2 layer), breathable "to be combined with waterproof jacket ILS mod.Tornhill/Cumbria", anti-pilling treatment. Straight collar, YKK zip closure, 2 pockets with zip closure. Hem finished with elastic fabric. Drawstring at the bottom of the head. Sleeves with elastic.

Material: fleece two layers 100% polyester gr. 285.

Colour available: grey.
(on request colours: red, blue navy, black).

Sizes: from S to 3XL.

Packing: 1/10.



ART.SI.DURANGO FLEECE FULL ZIP (TWO LAYER) GR.285 "DURANGO"

Fleece (2 layer), breathable "to be combined with waterproof jacket ILS mod. Cuczo/Tornhill", anti-pilling treatment. Straight collar, YKK zip closure, 3 pockets with zip closure, contrast insert. Elasticated hem. Windbreaker lining in front and back. One inside pocket.

Material: fleece two layers 100% polyester gr. 285.

Colour: black/grey.

Sizes: from XS to 3XL.

Packing: 1/5.





ART.VA.ECRA CARDIGAN FULL ZIP BICOLOR

Full zip collar cardigan. Reinforced with twill cotton on elbows. Left pocket with zip. 2 side pockets. 100% acrylic. Fabric big knit 525 gr / m2.

Colour:
dark grey/grey.

Sizes: from S to 3XL.

Packing: 1/20.



ART.CAR.70053U GILET FLEECE FULL ZIP

Gilet fleece full zip, two pockets with closure with zipper. 100% polyester gr. 280.

Colour: Anthracite, light grey, navy, green bottle, red.

Sizes available:
from S to 2XL.

Packing: 1/20.

AN MG BL RS VE
ANTRACITE GRIGIO MEL BLU NAVY ROSSO VERDE



ART.CO.BUCAREST JEANS SHIRT STRETCHING FABRIC

Long sleeve shirt, 1 left arm pocket, 2 chest pockets, good washing resistance, good abrasion resistance, side pads, elastic fabric.

COMPOSITION: 70% Cotton - 27% Polyester - 3% Elastane. Gr. 230 g / m².

NOT DETECTABLE BY METAL DETECTORS.

Sizes: from S to 4XL.

Packing: 1/30.
Taglie: dalla S alla 4XL.

(AVAILABLE: LIGHT VERSION ART. PEL. ARUBA).



ART.CO.EASY SHIRT LONG SLEEVE WITH PIPING

Shirt long sleeve with piping. Chest two pockets closed with button. Fabbri: cotton gr. 190.

Colour: Grey (on request: ecru, light blue).

Sizes: from S to 4XL.

Packing: 1/15.



ART.CO.BAHIA LONG SLEEVE SHIRT VELVET

Long sleeve shirt in cotton and lycra velvet (97/3%), double chest pocket with one flap closure and one with concealed zip, side opening, sweatband. Gr. 265.

Colours available: Blue navy (on request: ecru, grey).

Sizes: from S to 4XL.

Packing: 1/30.



ART.CAR.32358U LONG SLEEVE SHIRT POPELINE

Popeline long sleeve shirt 100% cotton gr. 120. Button collar. Light buttons. One chest pocket.

Colours: black, white, navy, royal, light blue.

Sizes: from S to 2XL.

Packing: 4/24.



ART.PEL.2019L LONG SLEEVE SHIRT POPELINE

Long sleeve shirt with collar buttons, chest front pocket. Fabric fil to fil 100% cotton gr.107.

Colours available: white, light blue.

Sizes: from S to XXL.

Packing: 1/10.

(Available also version half sleeve).



ART.BEC.JN633 WOMAN SHIRT WITH ELASTAME

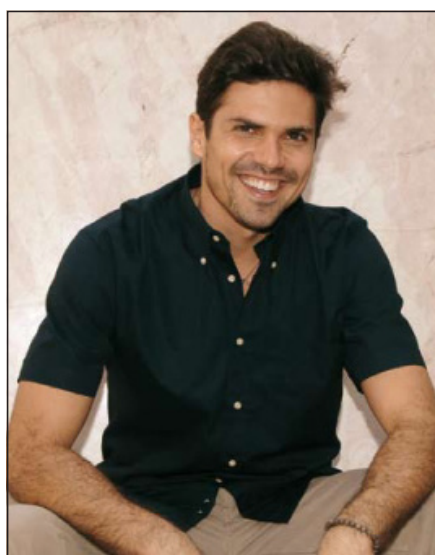
Long sleeve shirt, internal neck and cuffs design with strips in contrast. Manufactured ideal for woman. Pin on front and back, cuffs complete of double button.

Fabric: popeline 95% cotton, 5% elastane. Gr. 120 gr/m2.

Colour: navy/redwhite, red/navywhite, blue/navy-white, graphite/red-white.

Sizes: from XS to 2XL.

Packing: 5/20.



ART.CAR.32258U SHIRT HALF SLEEVE POPELINE

Popelin half sleeve shirt 100% cotton gr. 120. Button collar, one chest pocket. Light buttons.

Colours available: black, white, blue navy, royal, light blue.

Sizes: from S to 2XL.

Packing: 4/24.



ART.CAR.30050U POLO LONG SLEEVE GR 200 (100% COT. PIQUET)

Long sleeve polo, three button buttonhole opening, reinforcing tape on neck and shoulders. 100% cotton piquet gr. 200.

Colours available: blue navy. (on request: black, royal, green, red, orange, white, grey melange con extra price).

Sizes: from S to 2XL.

Packing: 1/24.



ART.BEC.JE710M PULLOVER WITH NECK "V"

V-neck pullover, sleeve cuffs and waistband, round sleeve. Washable at 40 °, resistant to the dryer. Fabric: 50 cotton / 50 acrylic. gr. 275.

Colours available: blue, black.

Sizes: from S to XXL.

Packing: 1/12.



ART.BEC.JN658 PULLOVER WOMAN NECK "V"

Women's V-neck light weight. Machine washable gr.260, 100% cotton fabric.

Colour: anthracite, grey, navy, black.

Sizes: from S to 2XL.

Packing: 1/30.



GAMMA SAFETY
www.gammasafety.it

Authorized distributor Romania

RIG ENERGY CONSULTANTS SRL
14 Gheorghe Grigore Cantacuzino
100010 Ploiesti, Romania
Email: info@rigenergy.ro
Mobile: +40 739 855 200
www.rigenergy.ro